

T M 1 1 - 6 6 1 5 - 2 5 0 - 2 4 P

TECHNICAL MANUAL

**ORGANIZATIONAL, DIRECT SUPPORT, AND GENERAL SUPPORT
MAINTENANCE REPAIR PARTS AND SPECIAL TOOLS LISTS
(INCLUDING DEPOT MAINTENANCE REPAIR PARTS AND SPECIAL TOOLS)
FOR
INDICATOR, PRECISE ANGLE ID-1450/ASN
(NSN 4920-00-851-8754)**

HEADQUARTERS, DEPARTMENT OF THE ARMY

SEPTEMBER 1978

TECHNICAL MANUAL
No. 11-6615-250-24P

HEADQUARTERS
DEPARTMENT OF THE ARMY
Washington, DC, 21 September 1978

**ORGANIZATIONAL, DIRECT SUPPORT, AND GENERAL SUPPORT
MAINTENANCE REPAIR PARTS AND SPECIAL TOOLS LISTS
(INCLUDING DEPOT MAINTENANCE REPAIR PARTS AND SPECIAL TOOLS)
FOR**

**INDICATOR, PRECISE ANGLE ID-1459/ASN
(NSN 4920-00-837-8734)**

Current as of 16 June 1978

REPORTING OF ERRORS

You can improve this manual by recommending improvements using DA Form 2028-2 located in the back of the manual. Simply rear out the self-addressed form, fill it out as shown on the sample, fold it where shown, and drop it in the mail.

If there are no blank DA Form 2028-2 in the back of your manual, use the standard DA Form 2028 (Recommended Changes to Publications and Blank Forms) and forward to the Commander, US Army Communications and Electronics Materiel Readiness Command, ATTN: DRSEL-NE-MQ, Fort Monmouth, New Jersey 07703.

In either case a reply will be furnished direct to you.

Table of Contents

	Page	Illus Figure
SECTION I Introduction	I	
II Repair parts list	5	
GROUP 00 Indicator, Precise Angle ID-1459/ASN	5	1
01 Indicators ME1, ME2, ME3	7	2
0101 Amplifier assembly	8	2
0102 Component board, electronic assembly	11	3
0103 Back restwork	11	
SECTION III Special tools list (if applicable)		
IV National stock number and part number index	12	

SECTION I

INTRODUCTION

1. Scope

This manual lists repair parts and special tools required for performance of organizational, direct support, and general support maintenance of the ID-1450/ASN.

2. General

This Repair Parts and Special Tools List is divided into the following sections:

a. *Section II. Repair Parts List.* A list of repair parts authorized for use in the performance of maintenance. The list also includes parts which must be removed for replacement of the authorized parts. Parts lists are composed of functional groups in ascending numerical sequence, with the parts in each group listed in figure and item number sequence.

b. *Section III. Special Tools List.* Not applicable.

c. *Section IV. National Stock Number and Part Number Index.* A list, in ascending National item identification number (NIIN, last 9 digits) sequence, of all National stock numbers appearing in the listings, followed by a list, in alphabetic sequence, of all part numbers appearing in the listings. National stock number and part numbers are cross-referenced to each illustration figure and item number appearance.

3. Explanation of Columns

The following provides an explanation of columns found in the tabular listings:

a. *Illustration.* This column is divided as follows:

(1) *Figure number.* Indicates the figure number of the illustration in which the item is shown.

(2) *Item number.* The number used to identify each item called out in the illustration.

b. *Source, Maintenance, and Recoverability Codes (SMR).*

(1) *Source code.* Source codes are assigned to support items to indicate the manner of acquiring support items for maintenance, repair, or overhaul of end items. Source codes are entered in the first and second positions of the Uniform SMR Code format as follows:

Code	Definition
PA	Item procured and stocked for anticipated or known usage.

XD—A support item that is not stocked. When required, item will be procured through normal supply channels.

NOTE

Cannibalization or salvage may be used as a source of supply for any items source coded above except those coded XA, AD, and aircraft support items as restricted by AR 700-42.

(2) *Maintenance codes.* Maintenance codes are assigned to indicate the levels of maintenance authorized to USE and REPAIR support items. The maintenance codes are entered in the third and fourth positions of the Uniform SMR Code format as follows:

(a) The maintenance code entered in the third position will indicate the lowest maintenance level authorized to remove, replace, and use the support item. The maintenance code entered in the third position will indicate one of the following levels of maintenance:

Code	Application/Explanation
O	Support item is removed, replaced, used at the organizational level.
H	Support item is removed, replaced, used at the general support level.
D	Support items that are removed, replaced, used at depot, mobile depot, specialized repair activity only.

(b) The maintenance code entered in the fourth position indicates whether the item is to be repaired and identifies the lowest maintenance level with the capability to perform complete repair (i.e., all authorized maintenance functions). This position will contain one of the following maintenance codes:

Code	Application/Explanation
H	The lowest maintenance level capable of complete repair of the support item is the general support level.
D	The lowest maintenance level capable of complete repair of the support item is the depot level.
Z	Nonreparable. No repair is authorized.

(3) *Recoverability code.* Recoverability codes are assigned to support items to indicate the disposition action on unserviceable items. The recoverability code is entered in the fifth position on the Uniform SMR Code format as follows:

Recoverability codes	Definition
Z	Nonreparable item. When unserviceable, condemn and dispose at the level indicated in position 3.
H	Reparable item. When uneconomically repairable,

**Recoverability
codes**

Definition

condemn and dispose at the general support level.

D—Reparable item. When beyond lower level repair capability, return to depot. Condemnation and disposal not authorized below depot level.

c. National Stock Number. Indicates the National stock number assigned to the item and will be used for requisitioning purposes.

d. Part Number. Indicates the primary number used by the manufacturer (individual, company, firm, corporation, or Government activity), which controls the design and characteristics of the item, by means of its engineering drawings, specifications standards, and inspection requirements, to identify an item or range of items.

NOTE

When a stock numbered item is requisitioned, the repair part received may have a different part number than the part being replaced.

e. Federal Supply Code for Manufacturer (FSCM). The FSCM is a 5-digit numeric code listed in SB 708-42 which is used to identify the manufacturer, distributor, or Government agency, etc.

f. Description. Indicates the Federal item name and, if required, a minimum description to identify the item.

g. Unit of Measure (U/M). Indicates the standard of the basic quantity of the listed item as used in performing the actual maintenance function. This measure is expressed by a two-character alphabetical abbreviation (e.g., ea, in, pr, etc.). When the unit of measure differs from the unit of issue, the lowest unit of issue that will satisfy the required units of measure will be requisitioned.

h. Quantity Incorporated in Unit. Indicates the quantity of the item used in the breakout shown on the illustration figure, which is prepared for a functional group, subfunctional group, or an assembly. A "V" appearing in this column in lieu of a quantity indicates

that no specific quantity is applicable, (e.g., shims, spacers, etc.).

4. Special Information

The following publications pertain to the ID-1450/ASN and its components:

TM 11-6615-250-12, Indicator, Precise Angle ID-1450/ASN

TM 11-6615-250-45, Indicator, Precise Angle ID-1450/ASN

5. How to Locate Repair Parts

a. When National stock number or part number is unknown.

(1) *First.* Using the table of contents, determine the functional group within which the repair part belongs. This is necessary since illustrations are prepared for functional groups and listings are divided into the same groups.

(2) *Second.* Find the illustration covering the functional group to which the repair part belongs.

(3) *Third.* Identify the repair part on the illustration and note the illustration figure and item number of the repair part.

(4) *Fourth.* Using the Repair Parts Listing, find the figure and item number noted on the illustration.

b. When National stock number or part number is known.

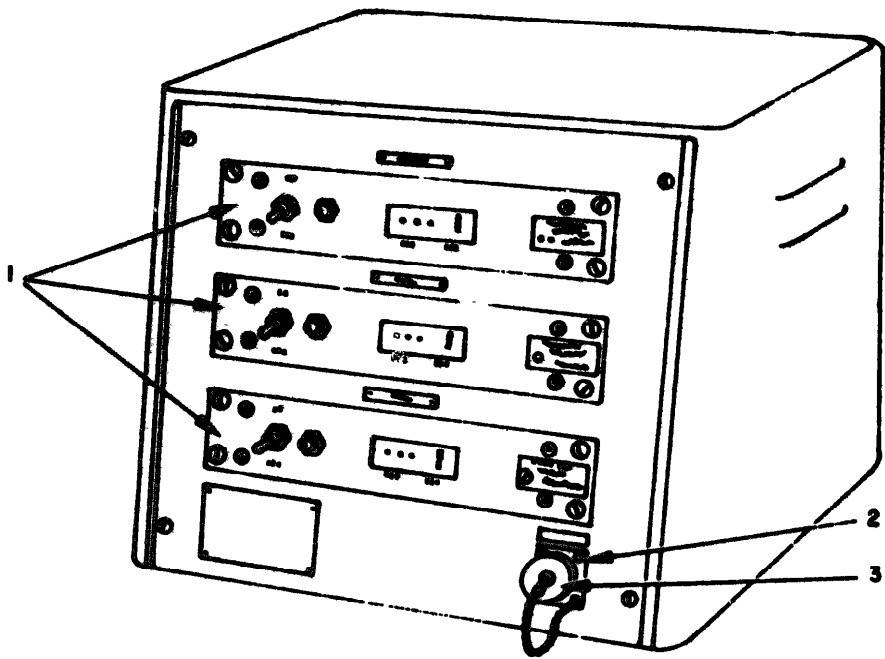
(1) *First.* Using the Index of National Stock Numbers and Part Numbers, find the pertinent National stock number or part number. This index is in ascending NIIN sequence followed by a list of part numbers in ascending alphanumeric sequence, cross-referenced to the illustration figure number and item number.

(2) *Second.* After finding the figure and item number, locate the figure and item number in the repair parts list.

6. Abbreviations

Not applicable.

(Next printed page is 4)



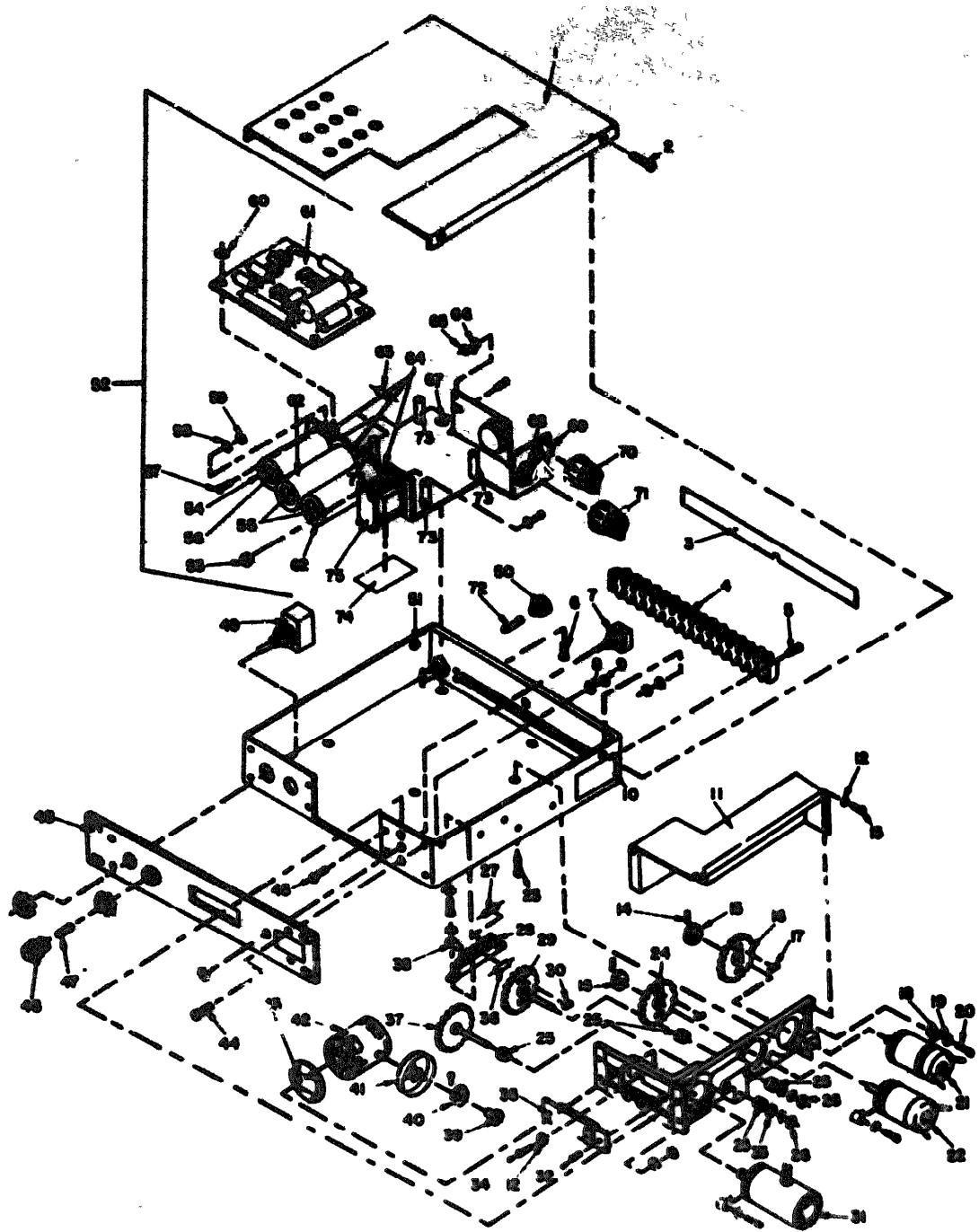
EL2CT001

Figure 1. Indicator, Precise Angle ID-1450/ASN.

SECTION II

TM 11-6615-250-24P

QUANTITY		UNIT	NATIONAL STOCK NUMBER	PART NUMBER	FORM	DESCRIPTION	USABLE ON CODE	QTY INC IN UNIT
REQ NO.	ITEM NO.							
GROUP 00 INDICATORS, PROCESS ANGLES IS-1487438								
1	1	INDIC	5935-00-716-6789	60721011V	60010	INDICATOR.....	EA	1
1	2	PLATE		PT02E10-10P	77000	CONNECTOR.....	EA	1
1	2	PLATE		10-10100-100	77000	CAPACITOR,CONNECTOR.....	EA	1



ELECT002

Figure 2. Indicators M1, M2, M3.

SECTION II

TM 11-6615-250-24P

(1) QUANTITY		(2) UNIT	(3) NATIONAL STOCK NUMBER	(4) PART NUMBER	(5) FCNM	(6) DESCRIPTION	(7) U.S. CODE	(8) QTY. IN UNIT
NO.	ITEM NO.	SMR CODE						
GROUP 01								
2	1	N0011		C31000411	00540	COVER.....	EA	1
2	2	N0011		N33206-14	00906	SCREEN.....	EA	4
2	3	N0011		C320005109	00540	CAM SHAFT, ELECTRICAL.....	EA	4
2	4	N0011		14-14079	71705	TERMINAL BOARD.....	EA	1
2	5	N0011		N33206-27	00906	SCREEN.....	EA	1
2	6	N0011		N33216-12	00906	SCREEN.....	EA	11
2	7	N0011		RTMAY	40200	SWITCH, DOUBLE.....	EA	1
2	8	N0011		N33209-11	00906	WASHER.....	EA	14
2	9	N0011	5310-00-013-4534	N33206-02	00906	NUT.....	EA	6
2	10	N0011		C30000047	00540	PLAT.....	EA	1
2	11	N0011		C310004374	00540	COVER.....	EA	1
2	12	N0011	5310-00-734-5661	N33209-70	00906	WASHER.....	EA	9
2	13	N0011		N33216-2	00906	SCREEN.....	EA	6
2	14	N0011		N457140204	00540	SCREEN,CAP, SOCKET.....	EA	6
2	15	N0011		C33000042	00540	CLAMP,COLLAR.....	EA	2
2	16	N0011		C310144001	00540	GEAR,ANTI BACK LASH.....	EA	1
2	17	N0011		C309009000	00540	SPRING,HELICA.....	EA	4
2	18	N0011		C330009003	00540	CLAMP,ARM,CARTRIDGE.....	EA	9
2	19	N0011		N457140203	00540	WASHER,LOCK.....	EA	9
2	20	N0011		N457140204	00540	SCREEN,CAP, SOCKET.....	EA	9
2	21	PAD11	5998-00-989-2482	BA5001-2E	00010	SYNCHRO,CONTROL.....	EA	1
2	22	N0011		SA5001-2E	70254	SYNCHRO,CONTROL.....	EA	1
2	23	PAD11	5305-00-689-0057	ANS07C40320	00004	SCREEN.....	EA	4
2	24	N0011		C310144000	00540	GEAR,ANTI BACK LASH.....	EA	1
2	25	N0011		SR14455400-15	70254	BEARING,BAL.....	EA	4
2	26	N0011	5345-00-590-1134	N31043D-4012	00936	RING,RETAINING.....	EA	2
2	27	PAD11	5839-00-171-1990	RC2009021J	01349	RESISTOR,FINE.....	EA	1
2	28	PAD11	5940-00-171-0410	2005	71705	TERMINAL BOARD.....	EA	1
2	29	PAD11	5040-00-630-0911	C310000325	00010	GEAR SHAFT ASSEMBLY.....	EA	1
2	30	N0011		C309009000	00540	SPRING,HELICA.....	EA	1
2	31	PAD1A	6165-00-570-1055	R000-20	00010	MOTOR GENERATOR.....	EA	1
2	32	N0011		N33200-2	00906	SCREEN.....	EA	2
2	33	N0011		04-4	00141	SPACER, BLUWU.....	EA	5
2	34	N0011		4750100404	00540	SCREW,MACHINE.....	EA	6
2	35	N0011		C370000302	00540	LENS.....	EA	1
2	36	PAD11	5925-00-599-1541	RC2009151J	01349	RESISTOR,FINE.....	EA	1
2	37	PAD11	3540-00-880-0310	C300000320	00540	GEAR SHAFT ASSEMBLY.....	EA	1
2	38	PAD11	5940-00-110-3244	2101-00-00	70109	TERMINAL,LUG.....	EA	1
2	39	N0011		C310004372	00540	GEAR,SPUR.....	EA	1

SECTION II

TM 11-6615-250-24P

QTY	UNIT	NATIONAL STOCK NUMBER	PART NUMBER	PAGE	DESCRIPTION	USABLE ON CODE	UNIT	QTY
2	EA		C 334009043	00240	CLAMP, CABLE		EA	1
2	EA		C 334009309	00340	DIAL, SCALE		EA	1
2	EA	6433-00-917-4786	B180534	79142	CONVERTER, ANGLE		EA	1
2	EA		C 160054261	00240	PLAT		EA	1
2	EA	5305-00-984-4906	M33208-33	00900	SCREW		EA	4
2	EA		M33208-26	00900	SCREW		EA	4
2	EA	6240-00-155-7857	M22237-320	70900	LAMP		EA	1
2	EA		111-3030-121	72619	LIGHT, INDICATOR		EA	1
2	EA		C 523006498	00540	PANEL		EA	1
2	EA	5930-00-655-1514	M335050-22	00900	SWITCH		EA	1
2	EA	5920-00-556-0144	342004	75915	FUSEHOLDER		EA	1
2	EA		69MCL-40	72962	NUT, SELF LOCKING		EA	4
2	EA		C 02734008A	00540	AMPLIFIER ASSEMBLY		EA	1
GROUP 0101 AMPLIFIER ASSEMBLY								
2	EA	5325-00-284-6047	M335467-1	00900	GRONNET		EA	1
2	EA		952	71705	SHIELD, ELECTRON		EA	1
2	EA	5960-00-634-0106	1204A	00131	ELECTRON TUBE		EA	2
2	EA	5960-00-755-4357	60R8A	00131	ELECTRON TUBE		EA	1
2	EA	5305-00-054-5437	M33216-3	00900	SCREW		EA	6
2	EA	5310-00-058-2950	M335337-77	00900	WASHER		EA	6
2	EA		M335449-24	00900	NUT		EA	6
2	EA	5310-00-782-1349	AMH00C4	30044	WASHER		EA	4
2	EA		C 534006300	00540	COMPONENT BOARD		EA	1
2	EA	5960-00-262-2905	953	71705	SHIELD, ELECTRON		EA	2
2	EA	5905-00-192-3907	RC206F104K	01340	RESISTOR, FINE		EA	1
2	EA		93M	71705	SOCKET, ELECTRON		EA	3
2	EA		M335649-44	00900	NUT		EA	1
2	EA		2101-04-00	70199	TERMINAL, LUG		EA	1
2	EA		69MCL-62	72962	NUT, SELF LOCKING		EA	4
2	EA	5935-00-721-2002	120-221	02600	CONNECTOR		EA	1
2	EA	5935-00-481-4722	120-210	02600	CONNECTOR		EA	1
2	EA	5935-00-560-0857	120-217	02600	CONNECTOR, PLU		EA	1
2	EA	5935-00-903-2297	120-220	02600	CONNECTOR, PLU		EA	1
2	EA	5920-00-474-4125	F02A250V2A3	01340	FUSE, CARTRIDGE		EA	1
2	EA		C 301106349	00540	POST, ELECTRICAL		EA	4
2	EA		C 300010006	00540	PLAT		EA	1
2	EA		C 702020101	00540	TRANSFORMER, POWER		EA	1

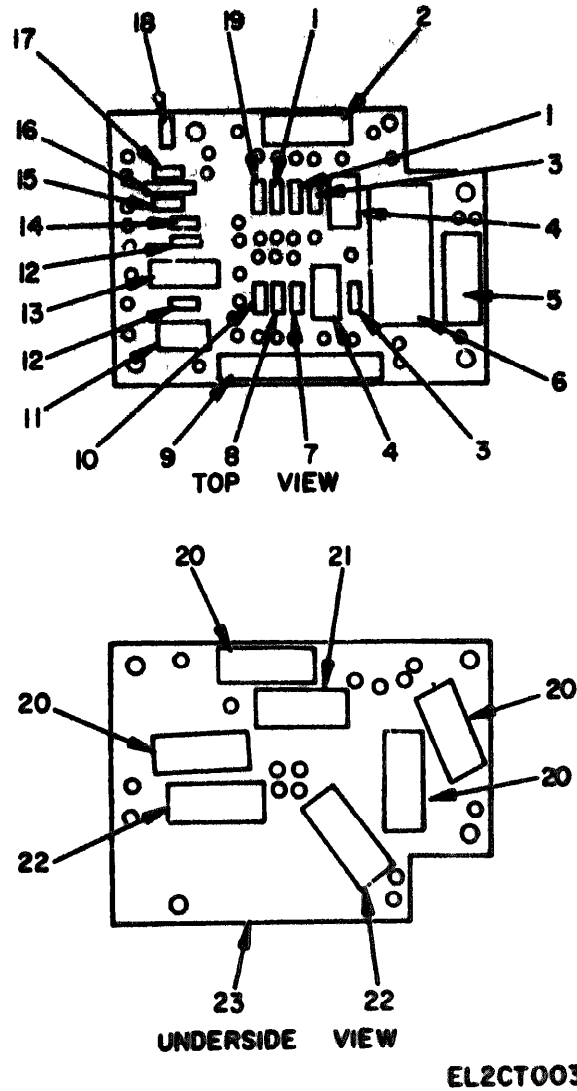


Figure 3. Component Board, Electronic Assembly.

SECTION II

TM 11-6615-250-24P

CLASSIFICATION		NSN CODE	NATIONAL STOCK NUMBER	PART NUMBER	FORM	DESCRIPTION	ORIGIN	QTY REQ IN LOT
GROUP NO.	ITEM NO.							
GROUP 018191						ELECTRONIC ASSEMBLY		
3	1	PANZZ	5904-00-192-1907	RC200F104K	01340	RESISTOR, FINE.....	SA	1
3	2	PANZZ	5910-00-006-1578	88R4-250	14450	CAPACITOR, FINE.....	SA	1
3	3	PANZZ	5905-00-171-1002	RC200F470K	01340	RESISTOR, FINE.....	SA	2
3	4	PANZZ	5961-00-079-1832	1M2403	00131	SEMICONDUCTOR.....	SA	2
3	5	PANZZ		RC11M6P15	43123	CAPACITOR, FINE.....	SA	1
3	6	PANZZ	5910-00-097-2099	FD12-350	03125	CAPACITOR, FINE.....	SA	1
3	7	PANZZ	5905-00-105-0966	RC200F470K	01340	RESISTOR, FINE.....	SA	1
3	8	PANZZ	0945-00-171-2009	RC200F222K	01340	RESISTOR, FINE.....	SA	1
3	9	PANZZ	0005-00-957-7377	RMB0W751	01340	RESISTOR, FINE, HIGH.....	SA	1
3	10	PANZZ		RC200F274K	01340	RESISTOR, FINE.....	SA	1
3	11	PANZZ		C4050271K	00340	CAPACITOR, FINE.....	SA	1
3	12	PANZZ	5905-00-279-3497	RC200F933J	01340	RESISTOR, FINE.....	SA	2
3	13	PANZZ		150P15004	50200	CAPACITOR, FINE.....	SA	1
3	14	PANZZ	5905-00-192-0649	RC200F203J	01340	RESISTOR, FINE.....	SA	1
3	15	PANZZ	5905-00-185-8518	RC200F100K	01340	RESISTOR, FINE.....	SA	1
3	16	PANZZ	5905-00-027-1218	300102A1	34200	CAPACITOR, FINE.....	SA	1
3	17	PANZZ	5905-00-195-0849	RC200F122K	01340	RESISTOR, FINE.....	SA	1
3	18	PANZZ		1M471	00042	SEMICONDUCTOR.....	SA	1
3	19	PANZZ	5905-00-239-0983	RC200F125K	01340	RESISTOR, FINE.....	SA	1
3	20	PANZZ		150P10404	50200	CAPACITOR, FINE.....	SA	4
3	21	PANZZ	5910-00-552-2428	0430-25	14450	CAPACITOR, FINE.....	SA	1
3	22	PANZZ		150P47504	50200	CAPACITOR, FINE.....	SA	2
3	23	PANZZ	5940-00-004-0428	C540056010	00010	TERMINAL BOARD.....	SA	1

SECTION IV

LATEST NATIONAL STOCK NUMBER ASSIGNMENTS ARE INCLUDED AT END OF INDEX					
STOCK NUMBER	FIGURE NO.	ITEM NO.	STOCK NUMBER	FIGURE NO.	ITEM NO.
5310-00-013-4536	2	9	8920-08-550-0144	2	20
5305-00-084-5637	2	17	8295-00-576-7055	2	21
5310-00-050-2930	2	20	8038-00-982-2297	2	22
5940-00-004-0428	3	23	5939-00-980-0857	2	23
6249-00-789-7897	2	24	9863-00-590-1238	2	24
5940-00-171-0410	2	25	5960-00-034-0106	2	25
5905-00-171-2979	2	26	5930-00-455-1514	2	26
5905-00-171-2802	3	27	5995-00-681-4722	2	27
5905-00-171-2809	3	28	5937-00-714-6729	2	28
5905-00-185-6946	3	29	5935-00-721-1802	2	29
5905-00-089-8910	3	30	5810-00-734-5601	2	30
5905-00-192-0649	3	31	5960-00-755-4357	2	31
5905-00-092-3787	3	32	5310-00-782-1949	2	32
5905-00-082-3587	3	33	5912-00-804-5538	2	33
5905-00-195-4807	3	34	5910-00-827-1218	3	34
5905-00-239-0503	3	35	5961-00-879-8552	3	35
5940-00-242-2905	2	36	5040-00-880-0510	2	36
5905-00-279-3497	2	37	8040-00-800-0511	2	37
5925-00-206-6047	2	38	0400-00-017-4786	2	38
5905-00-290-1941	2	39	0910-00-957-2059	3	39
5920-00-474-6125	2	40	5905-00-957-7377	3	40
5940-00-513-3264	2	41	5905-00-934-4918	2	41
5910-00-552-8420	3	42	5900-00-909-2462	2	42

PART NUMBER	FSCN	FIG. NO.	ITEM NO.	PART NUMBER	FSCN	FIG. NO.	ITEM NO.
AM507C632R6	88044	2	29	MS35489-1	96906	2	29
AM960C4	88044	2	40	MS55649-24	96906	2	30
B8R4-250	14653	3	2	MS35649-44	96906	2	45
BR50-25	14653	3	21	MS35649-62	96906	2	9
B188534	79142	2	42	PT02E14-18P	77620	1	2
B4-4	09141	2	33	RC200F103X	81349	3	15
CH153201K	06940	3	11	RC20GF104K	81349	2	48
C027210110	88018	1	1	RC20GF104K	81349	3	1
C0273400LA	06940	2	52	RC20GF122K	81349	3	17
C301006349	06940	2	75	RC200F125K	81349	3	19
C3060D4309	06940	2	41	RC20GF1513	81349	3	36
C3090D900	06940	2	30	RC20GF203J	81349	3	14
C3090D9000	06940	2	17	RC20GF222K	81349	3	8
C310006372	06940	2	39	RC20GF274K	81349	3	10
C310086323	88018	2	29	RC20GF393J	81349	3	12
CS10086326	06940	2	37	RC20GF470K	81349	3	3
C310144800	06940	2	24	RC20GF474K	81349	3	7
C310146001	06940	2	16	RC20GF021J	81349	2	27
C616006111	06940	2	1	RM61V751	81349	3	9
C315006372	06940	2	11	R809-2B	88018	2	21
C336009803	06940	2	18	SEM144SSU30-15	78894	2	25
C336C09042	06940	2	15	TD12-B50	93123	3	6
C336009843	06940	2	40	IN2403	80131	3	4
C340016686	06940	2	74	IN471	99947	3	18
C349856261	06940	2	45	10-10196-143	77620	1	3
C360606847	06940	2	10	111-3830-121	72619	2	47
C370G26302	06940	2	35	1284A	80131	2	55
C5228086189	06940	2	3	126-217	02660	2	70
C523086698	06940	2	48	126-210	02660	2	69
C536006388	06940	2	61	186-3520	02660	2	71
C548656018	88018	3	23	126-221	02660	2	68
C702026101	06940	2	75	158P10304	56289	3	13
F02A250V2AS	81349	2	72	158P10404	56289	3	20
M657160204	06940	2	14	158P47394	56289	3	22
M657160384	06940	2	20	16-140YFV	71785	2	4
M5651606303	06940	2	19	2TMIT	40288	2	7
NPC1N4P19	83123	3	5	2003	71785	2	28
NS16633-4912	96906	2	26	2101-04-00	78199	2	66
NS25237-320	96906	2	46	2101-06-00	78199	2	30
NS35038-22	96906	2	49	3M5901-3E	88018	2	21
M133248-2	96906	2	32	300102A1	56289	3	16
MS35236-14	96906	2	2	342804	79015	2	50
M233204-25	96906	2	44	4719168404	88018	2	34
MS35204-28	96906	2	45	SR3901-22	78894	2	22
MXS5181-27	96906	2	3	6386A	80131	2	54
MS23124-12	96906	2	6	69KSA-60	72942	2	51
NS13214-2	96906	2	18	69NC2-62	72942	2	47
MS35214-3	96906	2	37	952	71785	2	34
MS35337-77	96906	2	38	953	71785	2	42
MS35337-78	96906	2	12	9MK	71785	2	64
MS35359-41	96906	2	8				

LATEST NATIONAL STOCK NUMBER ASSIGNMENT
 STOCK NUMBER: 5905-00-039-0057
 FIG. NO.: 2
 ITEM NO.: 23

RECOMMENDED CHANGES TO EQUIPMENT TECHNICAL MANUALS



SOMETHING WRONG WITH THIS MANUAL

THEN... JOY DOWN THE DOPE ABOUT IT ON THIS FORM, TEAR IT OUT, FOLD IT AND DROP IT IN THE MAIL!

FROM: (YOUR UNIT'S COMPLETE ADDRESS)

Commander
Stateside Army Depot
ATTN: ANSDA-08
Stateside, N.J. 07703

DATE 10 July 1975

PUBLICATION NUMBER

TM 11-5840-340-12

DATE

23 Jan 74

TITLE

Radar Set AN/SPS-76

BE EXACT... PIN-POINT WHERE IT IS

IN THIS SPACE TELL WHAT IS WRONG AND WHAT SHOULD BE DONE ABOUT IT:

PAGE NO.	PARA-GRAPH	FIGURE NO.	TABLE NO.
2-25	2-28		
3-10	3-3		3-1
5-6	5-8		
		FO3	

Recommend that the installation antenna alignment procedure be changed through to specify a 2° IFF antenna lag rather than 1°.

REASON: Experience has shown that with only a 1° lag, the antenna servo system is too sensitive to wind gusting in excess of 20 knots, and has a tendency to rapidly accelerate and decelerate as it hunts, causing strain to the drive train. Hunting is minimized by adjusting the lag to 2° without degradation of operation.

Item 5, Function column. Change "2 db" to "3db."

REASON: The adjustment procedure for the TRANS POWER FAULT indicator calls for a 3 db (500 watts) adjustment to light the TRANS POWER FAULT indicator.

Add new step f.1 to read, "Replace cover plate removed in step e.1, above."

REASON: To replace the cover plate.

Zone C 3. On J1-2, change "+24 VDC to "+5 VDC."

REASON: This is the output line of the 5 VDC power supply. + 24 VDC is the input voltage.

TYPED NAME, GRADE OR TITLE, AND TELEPHONE NUMBER

SSG I. M. DeSpirito 999-1776

SIGN HERE:

SSG I. M. DeSpirito

DA FORM 2028-2
1 AUG 74

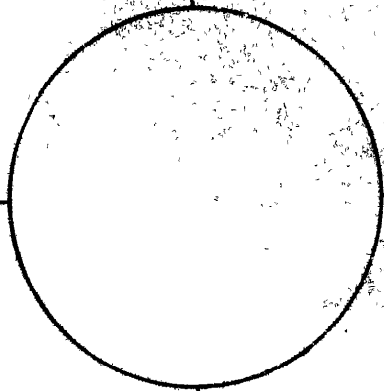
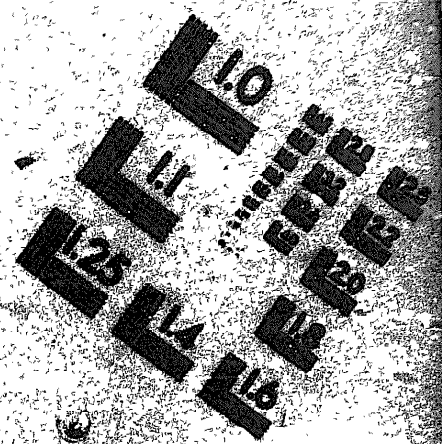
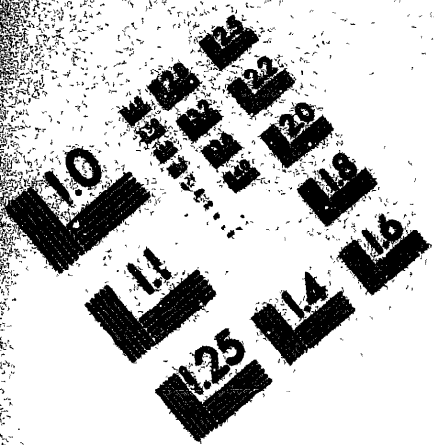
P.S.--IF YOUR OUTFIT WANTS TO KNOW ABOUT YOUR MANUAL "FIRST," MAKE A CARBON COPY OF THIS AND GIVE IT TO YOUR HEADQUARTERS.

HISA 1686-75

TEAR ALONG DOTTED LINE



DEPARTMENT OF THE ARMY
MICROFORMA
TEST TARGET



150 MM

1.0 mm (e= .31 mm)

ABCDEFGHIJKLMN OPQRSTUVWXYZ 1234567890
abcdefghijklmnopqrstuvwxyz \$%&' / # 1/2 1/4 — + x & @ *

1.5 mm (e= 1.09 mm)

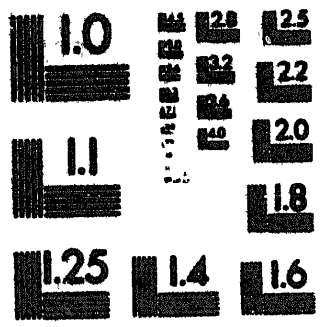
ABCDEFGHIJKLMN OPQRSTUVWXYZ 1234567890
abcdefghijklmnopqrstuvwxyz \$%&' / # 1/2 1/4 — + x & @ *

2.0 mm (e= 1.37 mm)

ABCDEFGHIJKLMN OPQRSTUVWXYZ
abcdefghijklmnopqrstuvwxyz
1234567890 \$%&' / # 1/2 1/4 — + x & @ *

2.5 mm (e= 1.77 mm)

ABCDEFGHIJKLMN OPQRSTUVWXYZ
abcdefghijklmnopqrstuvwxyz
1234567890 \$%&' / # 1/2 1/4 — + x & @ *



1.0 mm (e= .31 mm)

ABCDEFGHIJKLMN OPQRSTUVWXYZ 1234567890
abcdefghijklmnopqrstuvwxyz \$%&' / # 1/2 1/4 — + x & @ *

1.5 mm (e= 1.09 mm)

ABCDEFGHIJKLMN OPQRSTUVWXYZ 1234567890
abcdefghijklmnopqrstuvwxyz \$%&' / # 1/2 1/4 — + x & @ *

2.0 mm (e= 1.37 mm)

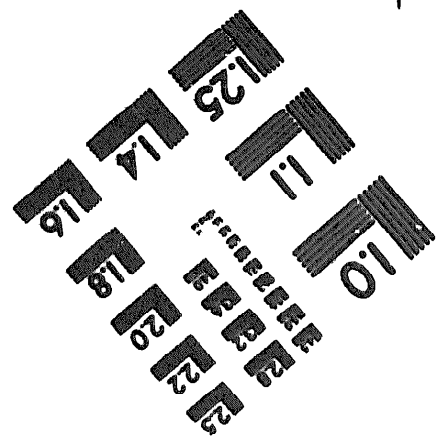
ABCDEFGHIJKLMN OPQRSTUVWXYZ
abcdefghijklmnopqrstuvwxyz
1234567890 \$%&' / # 1/2 1/4 — + x & @ *

2.5 mm (e= 1.77 mm)

ABCDEFGHIJKLMN OPQRSTUVWXYZ
abcdefghijklmnopqrstuvwxyz
1234567890 \$%&' / # 1/2 1/4 — + x & @ *



200 MM



250 MM

By Order of the Secretary of the Army:

BERNARD W. ROGERS
General, United States Army
Chief of Staff

Official:

J. C. PENNINGTON
Brigadier General, United States Army
The Adjutant General

Distribution:

To be distributed in accordance with DA Form 12-36, Organizational maintenance requirements for ID-1450/ASN.

END

7-25-83

DATE



SOMETHING WRONG WITH THIS MANUAL?



THEN... JOT DOWN THE DOPE ABOUT IT ON THIS FORM. TEAR IT OUT, FOLD IT AND DROP IT IN THE MAIL!

FROM: (YOUR UNIT'S COMPLETE ADDRESS)

DATE

PUBLICATION NUMBER

TM 11-6615-250-24P

DATE

21 Sep 78

TITLE

Indicator, Precise
Angle ID-1450/ASH

BE EXACT... PIN-POINT WHERE IT IS

PAGE NO.

PARA-GRAPH

FIGURE NO.

TABLE NO.

IN THIS SPACE TELL WHAT IS WRONG AND WHAT SHOULD BE DONE ABOUT IT.

TEAR ALONG DOTTED LINE

TYPED NAME, GRADE OR TITLE, AND TELEPHONE NUMBER

SIGN HERE:

FILL IN YOUR
UNIT'S ADDRESS

FOLD BACK

DEPARTMENT OF THE ARMY

POSTAGE AND FEES PAID
DEPARTMENT OF THE ARMY
DDO-614



OFFICIAL BUSINESS
PENALTY FOR PRIVATE USE, \$300

Commander
US Army Communications and
Electronics Materiel Readiness Command
ATTN: BRSEL-ME-MQ
Fort Monmouth, New Jersey 07703

TEAR ALONG DOTTED LINE

FOLD BACK

REVERSE OF DA FORM 3226-2

FILL IN YOUR
UNIT'S ADDRESS

FOLD BACK

DEPARTMENT OF THE ARMY

POSTAGE AND FEES PAID
DEPARTMENT OF THE ARMY
DDO-31A



OFFICIAL BUSINESS
PENALTY FOR PRIVATE USE, \$300

Commander
US Army Communications and
Electronics Material Readiness Command
ATTN: DRESL-ME-MQ
Fort Monmouth, New Jersey 07703

TEAR ALONG BOTTOM LINE

FOLD BACK

REVERSE OF DA FORM 3235-2

FILL IN YOUR
UNIT'S ADDRESS

FOLD BACK

DEPARTMENT OF THE ARMY

OFFICIAL BUSINESS
PENALTY FOR PRIVATE USE, \$300

POSTAGE AND FEES PAID
DEPARTMENT OF THE ARMY
DDO-014



Commander,
US Army Communications and
Electronics Material Readiness Command
ATTN: DESEL-ME-MQ
Fort Monmouth, New Jersey 07703

FOLD BACK

REVERSE OF DA FORM 222-3